

 **rapid labels.**

# Manufacturing Solutions

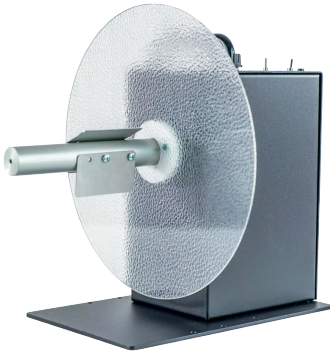
Printing, Scanning, Rewinding, unwinding, peel and present





# Manufacturing Unwinder Solutions

Labelmate UCAT-1



*Labelmate UCAT-1 Unwinder*

Label Unwinders provide a convenient way to manage your supply roll of labels as it feeds into a printer. Using larger rolls of labels to minimise your unit label cost means the supply label roll does not have to be refreshed as often, saving time and adding convenience. External label rolls are always visible, making it easy to monitor the status of your label supply.

The Labelmate **UCAT-1** is a non-powered label unwinder which helps hold your roll of labels as the printer pulls it in.

It has a built in braking mechanism giving you tension adjustment. This full-size, low-cost label unwinder is perfect for those jobs where you need to print a large roll of labels without having to stop.

With various core sizes, label widths, roll diameters and options to choose from, there is an unwinder to fit any job you may have. This unwinder is designed for worry-free 24/7 operation.

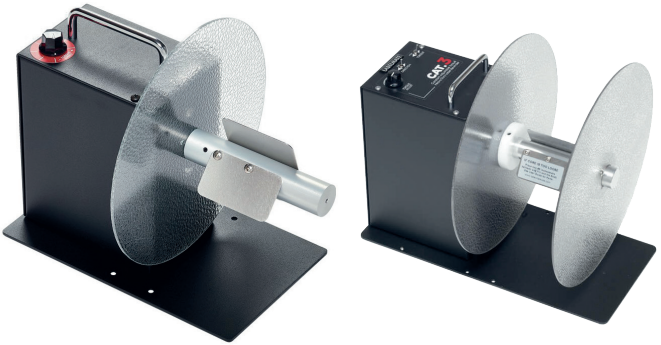
**Contact us for more information – 0800 865 223 or [thehub@rapidlabels.nz](mailto:thehub@rapidlabels.nz)**

[www.rapidlabels.nz](http://www.rapidlabels.nz)



# Manufacturing Rewinder Solutions

Labelmate MiniCat-10A and Cat-3



*Labelmate MiniCat-10A and Cat-3 Rewinders*

Label Rewinders wind labels into a roll as they come out of a printer. If you don't use a rewriter, you have to gather up the labels by hand once the printing job is finished. Using a rewriter is much more convenient and saves you time.

The Labelmate **MiniCat-10A** is a low cost, compact label rewriter with a 76mm core or coreless rewind shaft and it holds a roll diameter up to 220mm.

The Labelmate **CAT-3** range of full size label rewriters are heavy-duty, easy to set up and designed for worry-free 24/7 operation.

- CAT-3-Standard has a Fin-Style Core Holder.
- CAT-3-ACH employs an adjustable core holder enabling the use of varying core sizes.
- CAT-3-CHUCK includes a quick-locking "Quick-Chuck" Core Chuck permitting the fastest loading and unloading of cores and label rolls.

With various core sizes, label widths, roll diameters and options to choose from there is a rewriter to fit any job you may have.



# Manufacturing Print, Scanner & Tablet Solutions

Zebra ZT230, ZT411, DS3678 and ET5X



The **Zebra ZT230** offers reliable printing for a wide variety of applications and is designed for ease-of-use where higher volume printing is required. The **Zebra ZT411** has a 4.3-inch full-colour touch display with intuitive interface making it easy to use, and it shows colour-coded printer status alerts. With USB, Ethernet and Bluetooth connectivity it makes for a perfect pair for batch coding labels, when connected with the **Labelmate MiniCat-10A**.

The **DS3600** scanner series offer unstoppable performance for superior capture of 1D/2D barcodes, photos, documents and more, streamlining many everyday business processes.

And the **ET5X** tablet series are a rugged yet lightweight tablet solution perfect for the work environment, workers and apps. These tablets deliver fast and accurate barcode capture, can be used for video calling to improve collaboration and take high resolution photos and videos, capturing signatures and documents to streamline everyday tasks.





## *Overprinting / Batch Coding and Variable Print Solutions*

Our technical label experience, combined with our extensive printer, unwinder and rewinder product knowledge, makes Rapid Labels the best option for companies looking for overprinting, batch coding and variable data print solutions.

Whether you need to print a best before date on demand, batch code, sequential number, unique QR code or any other variable data before label application, we have the technical expertise to help you out.



 **rapid labels.**



Rapid Labels Manufacturing Solutions

*We're here to help you with  
your labels*

We've been providing New Zealand with labels for over 50 years and we understand that sometimes you need to do a bit of printing too.

Talk to us, we'll help you find Manufacturing Solutions that best suit your needs.

Contact our Hub Team and they'll point you in the right direction: 0800 865 223 or [thehub@rapidlabels.nz](mailto:thehub@rapidlabels.nz)

 **rapid labels.**

HQ: 3 Armstrong Road, Albany, Auckland  
[www.rapidlabels.nz](http://www.rapidlabels.nz) | 0800 865 223