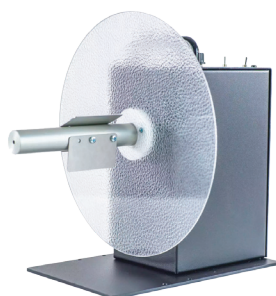
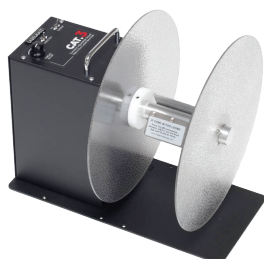


Unwinders / Rewinders / Applicators / Dispensers



- Labelmate unwinders and rewinders
- Towa applicators and dispensers



Labelmate unwinders, rewinders, Towa applicators and dispensers

Labelmate unwinders and rewinders are a convenient way to handle rolls of labels as they feed in or out of a printer. There are a variety of core sizes, label widths, roll diameters and options to choose from.

Towa hand-held label applicators feature the quality and robustness you would expect. Towa label applicators out-perform and out-last all other similar products. Loading and operation is a breeze, and the Mecha-Sensor automatically adjusts the stroke length to match the label.

rl id	model	max web width	core	power	max roll dia.	additional info
400436 ^Ω	Labelmate U-Cat-1 Un-winder	150mm	76mm	No power	300mm	Fins
400439 ^Ω	Labelmate MC 10A Re-winder	115mm	76mm	Variable voltage PSU	220mm	Fins
405942 ^Ω	Labelmate MC 11 Re-winder	130mm	25-100mm	Variable voltage PSU	220mm	Adjustable 3 rod core holder
400437 ^Ω	Labelmate CAT3 Heavy Duty Re-winder	150mm	76mm	Variable voltage PSU	300mm	Fins with flange
400705	Labelmate LD100RS Label Dispenser	114mm	76mm	Powered with gap sensor	220mm	Peel, present and rewind

rl id	model	max web width	core	stroke	max roll dia.	additional info
400459	Towa APN10-30 Hand Applicator	20-30mm	25-42mm	10-60mm	100mm	Straight edge labels
400461	Towa APN30 Hand Applicator	20-30mm	25-42mm	18-60mm	100mm	Straight edge labels
400462 ^Ω	Towa APN60 Hand Applicator	25-60mm	25-42mm	18-60mm	100mm	Straight edge labels
401484	Towa APF30 Hand Applicator	20-30mm	25-42mm	20-60mm	100mm	Round, oval and straight edge labels
400458	Towa APF60 Hand Applicator	20-60mm	25-42mm	20-60mm	100mm	Round, oval and straight edge labels
400460 ^Ω	Towa APF100 Hand Applicator	20-100mm	25-42mm	20-60mm	100mm	Round, oval and straight edge labels

^Ω In stock / shorter lead time

